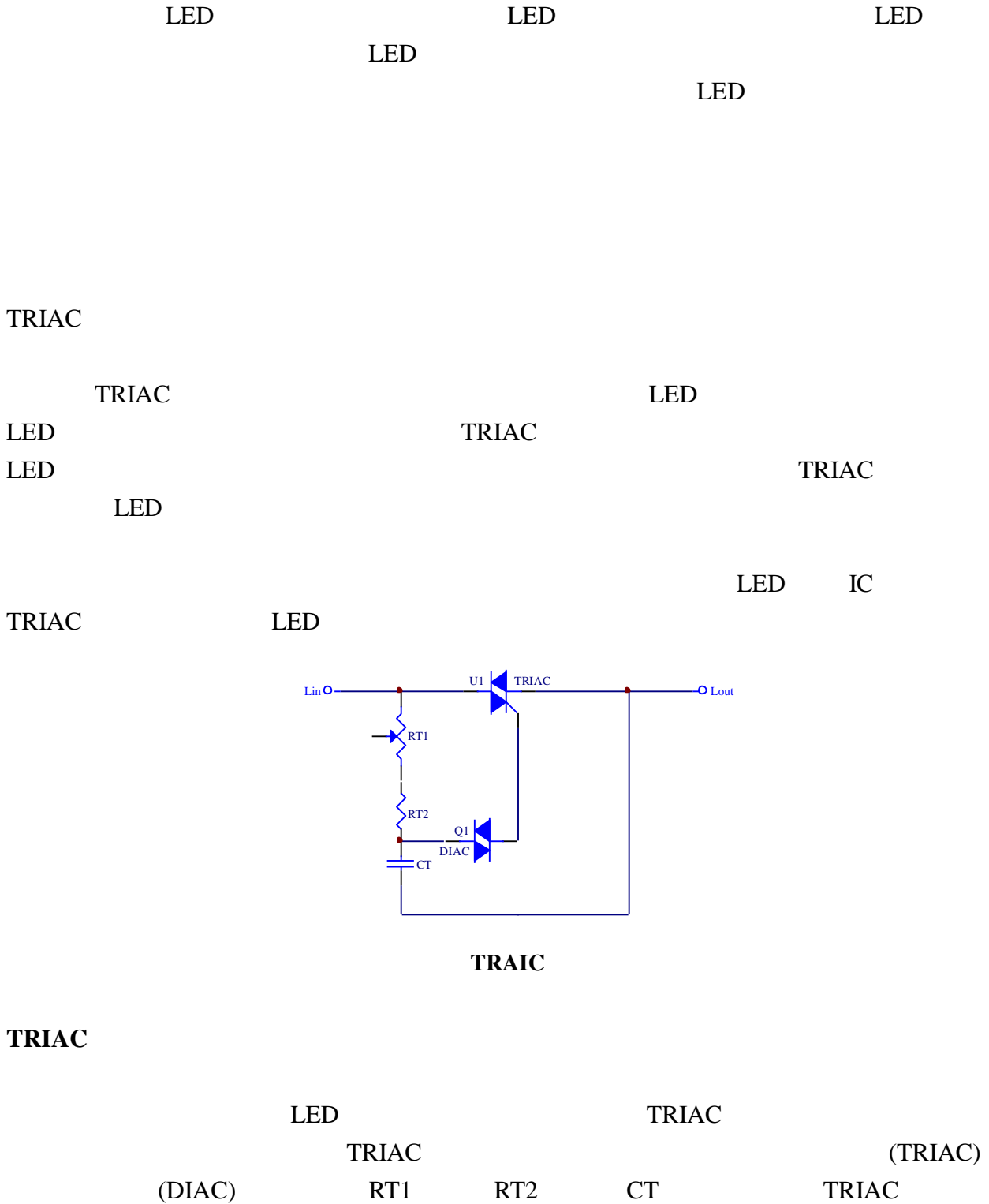


適用可調光 LED 照明的線性驅動電路

作者：陳威銘 / 達鑫電子產品應用經理



TRIAC

TRIAC

(Holding Current)

TRIAC

TRIAC

DIAC RT1 RT2 CT

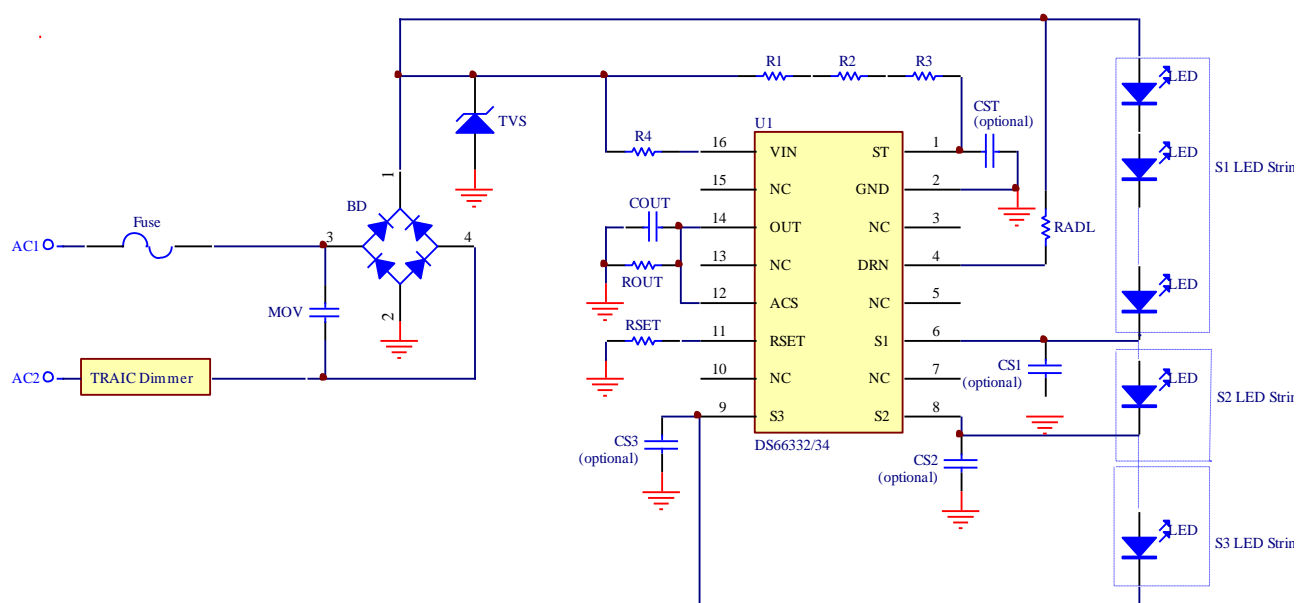
RT1 RT2 CT

CT TRIAC DIAC TRIAC RT1

CT

LED

LED IC LED



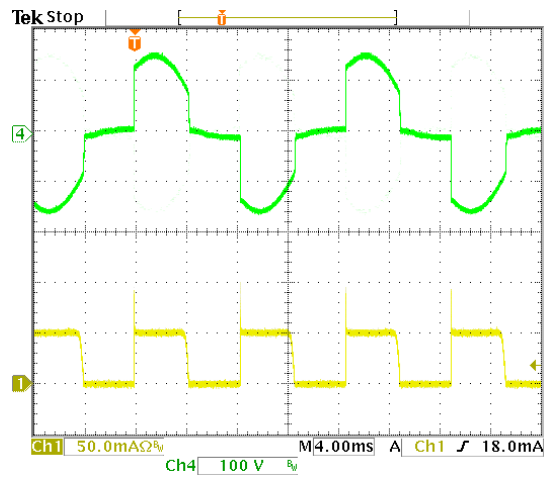
LED

Tek Stop

50.0mV 50.0mV 100 V 4.00ms A Ch2 26.0mA

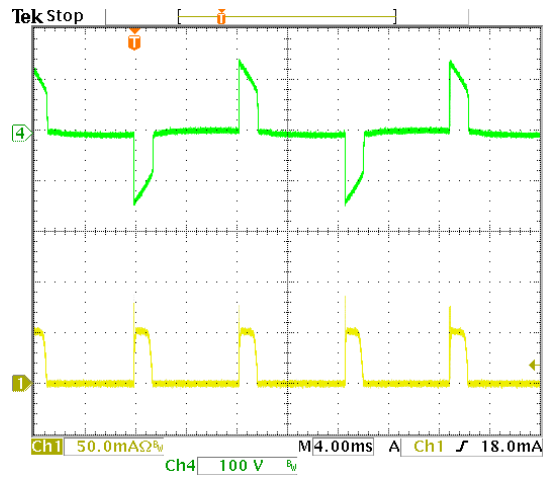
Ch1 50.0mV Ch2 50.0mV Ch3 50.0mV Ch4 100 V

A 3D scatter plot showing the distribution of 18 different lighting fixture types across three dimensions: X (0 to 120), Y (0 to 120), and Z (0 to 120). The fixtures are represented by colored spheres and labeled with their names. The distribution is roughly spherical, with fixtures concentrated in the upper half of the plot. The labels include: LED, TRAIC, TRIAC, DS6632/34, RADL, and LED.



CH4: Input Voltage after TRAIC Dimmer, CH1: LED Current

60



CH4: Input Voltage after TRAIC Dimmer, CH1: LED Current

120

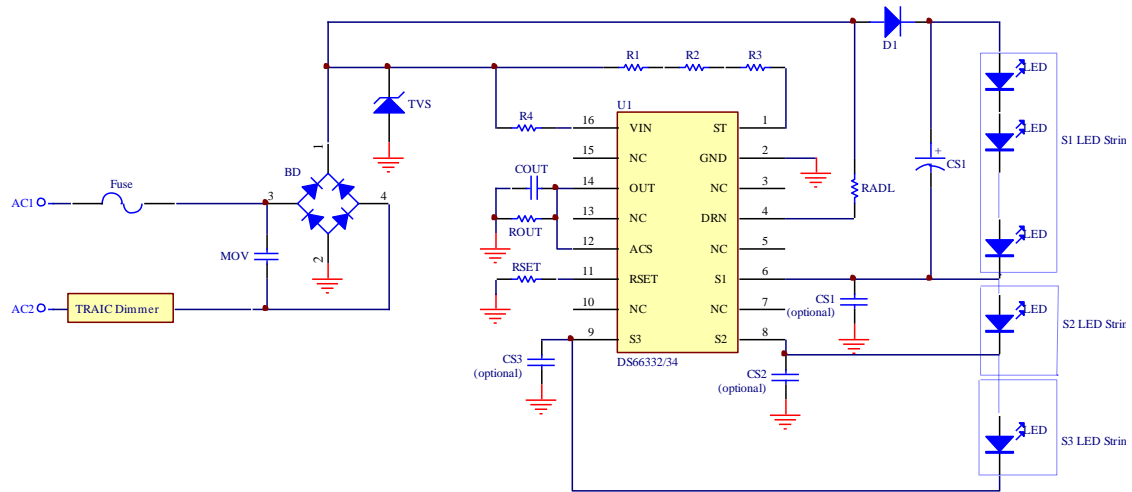
LED LED LED

LED

LED LED

LED

S1 LED CS1 S1 LED



LED

DS6632/34

LED

LED

DS6632/34

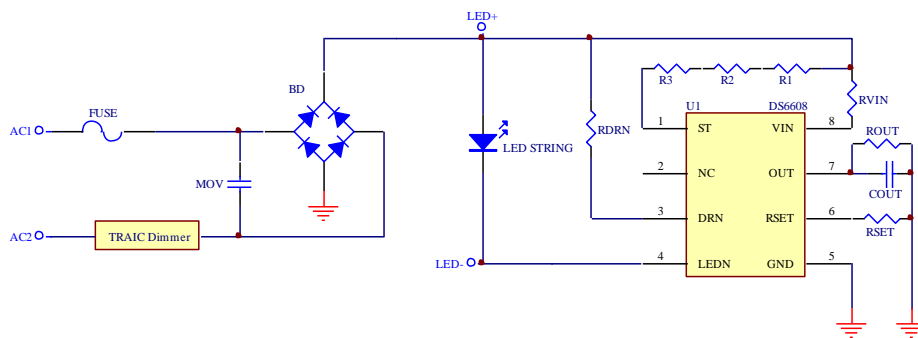
LED

DS6608

LED

LED

LED



LED

LED

TRIAC

LED

TRIAC

LED

LED

LED

LED

LED

LED